

## FHiWeb Android Client

# USER GUIDE

FHiWeb Android Client allows FHiWeb customers to connect to their FHiWeb hosts from Android devices, with an emphasis on maintaining a high degree of usability for Windows applications accessed remotely through the Android device. This document describes how to use FHiWeb Android Client.

### Using FHiWeb Android Client

When you first launch the Android Client, you will be presented with the Host List that allows you to select a host to connect to.

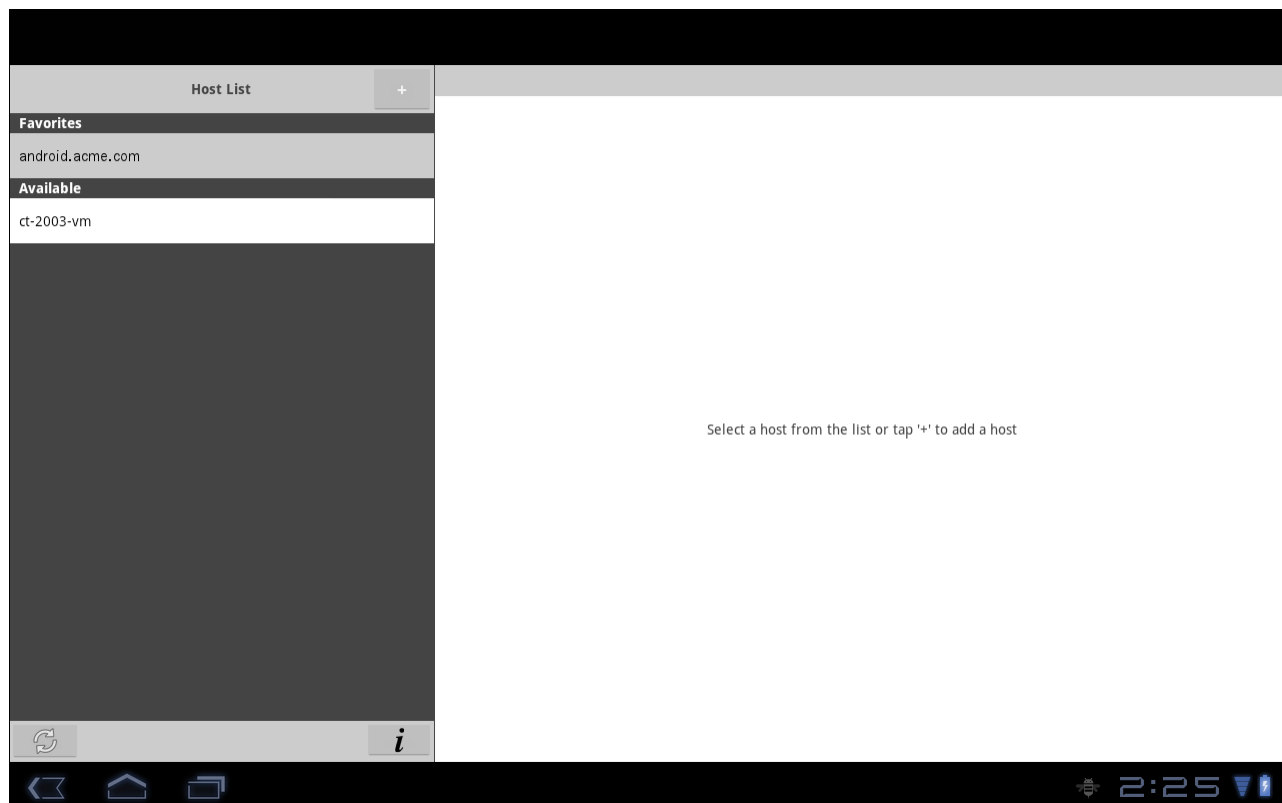


Figure 1: FHiWeb Android Client Host List

The Host List represents a combination of hosts from several different sources, as follows:

- **Discovered hosts:** FHiWeb Android Client includes a host discovery mechanism that automatically locates FHiWeb Windows Hosts on the local network (the current subnet) to which the Android device is connected. Host discovery will not work in cases where your device is only connected to a 3G network, and will only discover hosts running FHiWeb Windows Host version 4.1 and later. If new hosts have recently been booted-up and are not showing in the discovered host list, tap the refresh button on the bottom left corner of the screen to refresh the list.
- **Recent hosts:** The Android Client maintains a list of the recent hosts that have been connected to.
- **Favorite hosts:** FHiWeb Android Client supports a favorite hosts list, which is user editable. When connecting to a host, you may choose to store the host (including its address and other relevant settings) in the favorite hosts list.

When a host is selected from the list, its details will appear in the panel on the right.

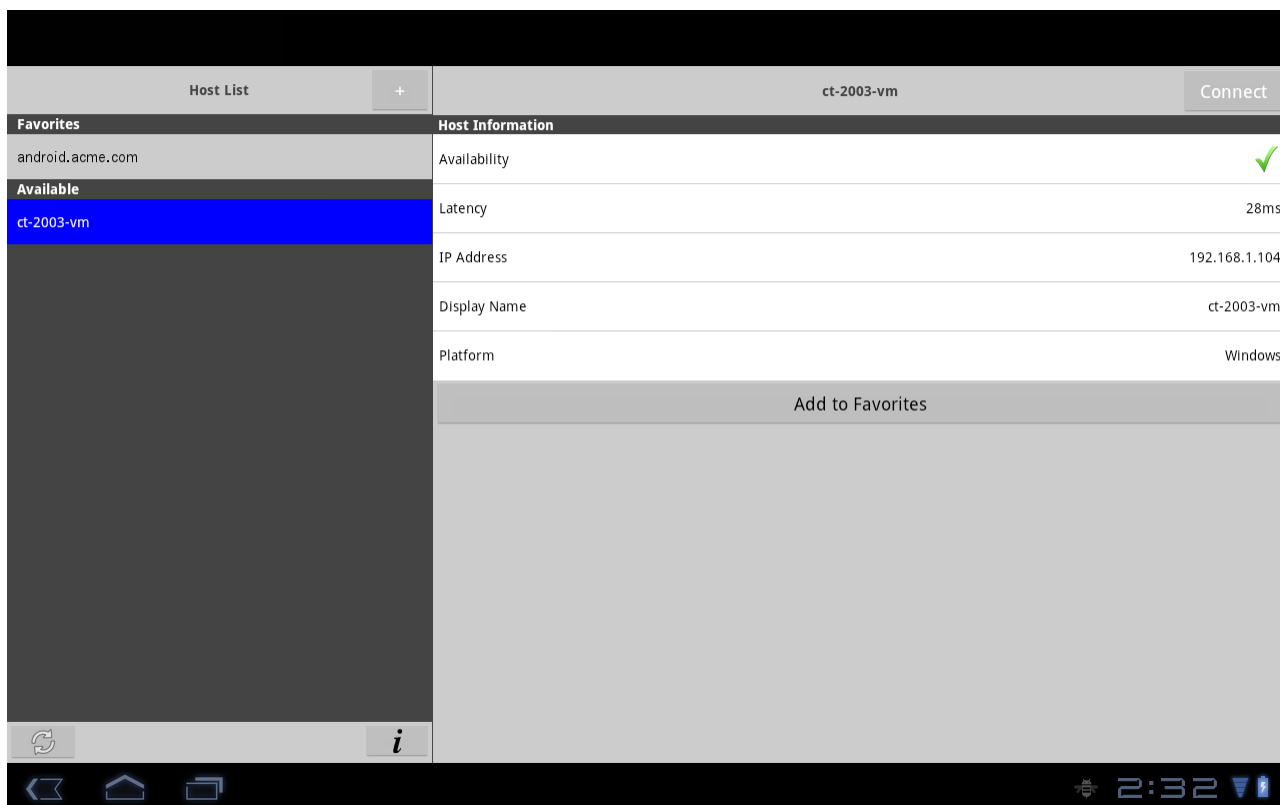


Figure 2: When a host is selected, the right side panel shows a detailed view for that host.

To connect to a host, select it from the host list on the left, and then tap the gray **Connect** button on the right.

The detail panel displays information such as the host's name, URL, IP address, and availability and network latency information (if available). This panel also includes an **Add to Favorites** button that stores the host in the Android Client's Favorites database. Adding a host to the Favorites database allows you to customize certain parameters regarding that host, including port number and the default application that is launched when the host is connected.


Settings	
Auto Zoom	
Auto Launch	Enter Application Name
Port Number	491
Image Compression	

Figure 3: The host settings pane.

**Note:** The host settings pane will only appear for hosts that have been added to the Favorites list – not for hosts in the Recents or Discovered lists.

The following are the currently supported options:

- **Auto Zoom:** Auto Zoom improves session usability by automatically zooming and panning into active windows, thereby making it easier to tap buttons and other user-interface elements in those windows. When a window is closed, the session will automatically zoom out to fit the newly active window.
- **Auto Launch:** Auto Launch automatically launches the specified application when the session is launched. The name provided must be either the display name of the application (e.g., “Microsoft Word”), or the name of the program’s executable (e.g., “notepad.exe”). If the specified application is not listed in the host’s program list in the FHiWeb Cluster Manager, the full path to the executable will have to be specified (e.g., “C:\Program Files\Microsoft\Microsoft Office\OFFICE14\winword.exe”).
- **Port Number:** While FHiWeb sessions use the 491 port by default, this setting allows you to use a different TCP/IP port to connect to your host. The FHiWeb host must be configured to accept connections on the specified port, and any firewalls must be configured to allow incoming connections on the specified port.
- **Image Compression:** Image compression decreases the color resolution of the session from 16-bit color to 8-bit color. This slightly reduces the image quality of pictures and other images, but it decreases the session’s bandwidth utilization. This option is especially useful for remote sessions running over 3G connectivity or other lower bandwidth connections.

## ADDING A HOST

In cases where you need to connect to a host that is not on the local network, tap the ‘+’ button on the top to add your own host, specifying either its URL or its IP address.

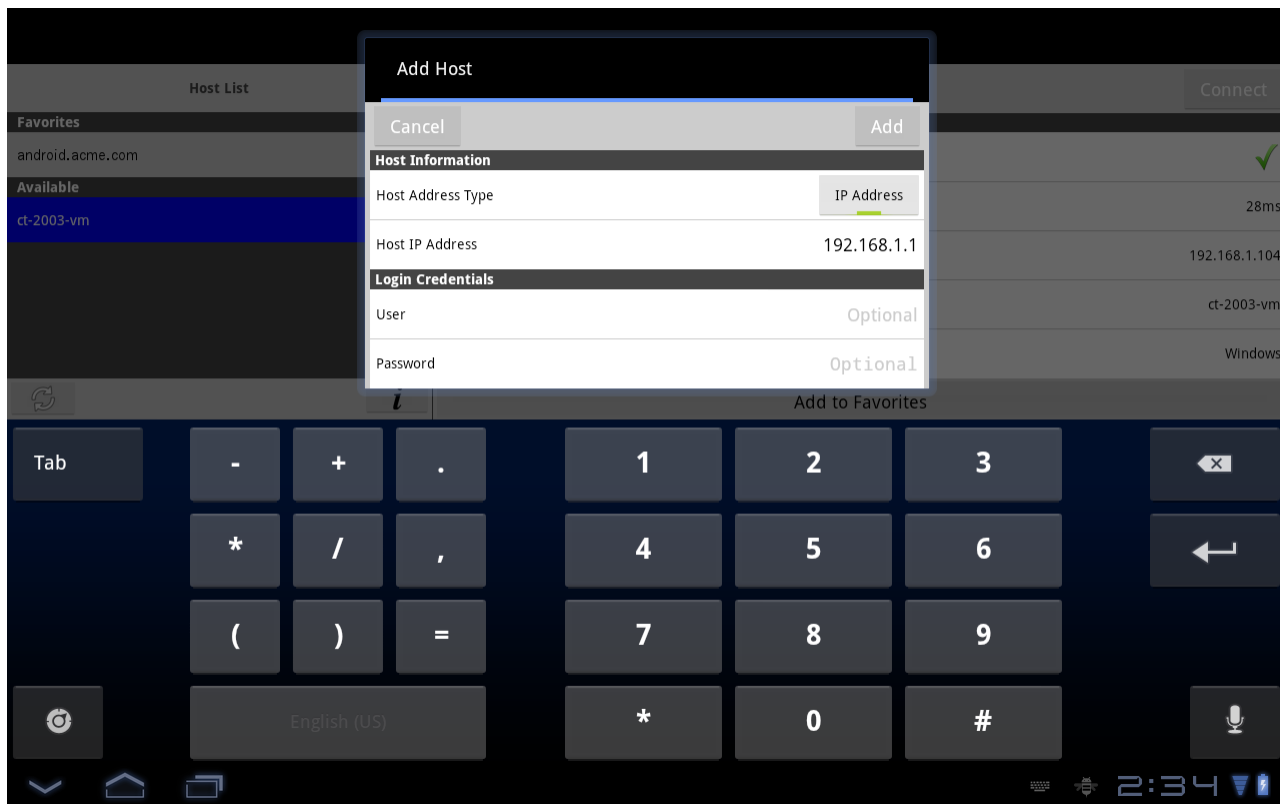


Figure 4: The Add Host screen.

This dialog box allows you to enter an IP address or click the URL button to enter a URL that the FHiWeb Android Client will connect to. This screen also allows you to enter user credentials that will be stored on your Android device to prevent you from having to enter those every time you connect to the host. If you do not enter user credentials, the Android Client will prompt you for them every time you connect to the host.

After entering the host information, tap the **Add** button to add the host to your Android Client’s Favorites database. Tap the **Connect** button to connect to your host.

## INTERACTING WITH THE HOST

Once a session is established, you interact with the host using several multi-touch gestures. These gestures allow you to interact naturally with applications running on the host, even though the device lacks a mouse and keyboard. The following are common operations achievable using a mouse and keyboard, and a description of how to perform them using the Android Client.

### *Understanding the Host Canvas*

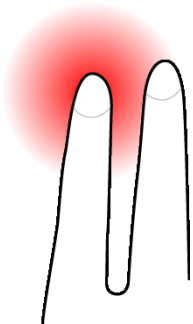
When connecting to a host using the Android Client, the image you see on the screen is essentially a canvas just like any other canvas on the Android device. You can pinch in and out to zoom in and out of the image, and drag your finger across the screen to pan to different areas of the image. This behavior is identical to what you'd find in Browser, Gallery, and many other Android applications.

### *Clicking and Double-Clicking*

In order to click or double-click a button or other user interface components from the host, simply tap or double-tap on the touchscreen. If the user interface component on the host is too small to tap accurately with your finger, temporarily zoom in, then tap the component.

### *Right-Clicking*

In order to achieve a right mouse click, perform a two-finger tap at the position where you'd like the right-click to occur. The actual position of the right-click will be at the position of your *left* finger.



*Figure 5: Right-clicking by tapping two fingers on the screen.*

## Dragging

In order to drag the mouse over the application (for dragging windows, selecting text in a document, etc.), tap and hold at the area of the screen where you'd like the drag operation to begin, and then begin dragging your finger across the screen. At this point, an on-screen indicator will appear indicating that a drag operation is in progress. Hold your finger steady for a brief moment before you begin dragging it. Otherwise, the FHiWeb Android Client will simply pan the host image, and dragging will not occur.

## Scrolling

In order to easily scroll through a document, drag two fingers vertically. Dragging upwards scrolls down, while dragging downwards scrolls up. The further you go in each direction, the faster the scrolling.

## Using the Touch Keyboard

To type in an application, open the Android device's touch keyboard. Perform a three-finger tap anywhere on the screen by simultaneously putting three fingers anywhere and immediately releasing them. The keyboard can be closed the same way. Another option is to bring up the on-screen toolbar and use the keyboard buttons on the toolbar. To expose the on-screen toolbar, press and hold a single finger anywhere on the screen. This will bring up the toolbar for several seconds until it is automatically hidden.

## Special Keys Support

The Android Client adds an extra row of keys to the top of the soft keyboard. This row includes ctrl, shift, alt, tab, esc, home, end, insert, delete, etc. For example, to copy and paste text, highlight the text and press the ctrl + c button to copy it. Then press the ctrl + v button to paste the text. To see all the special keys, scroll the keys on the right side of the top row by sliding a finger to the left and right over the keys.

## Using the On-Screen Toolbar

The on-screen toolbar exposes some options while the session is active. In order to expose it, press and hold a single finger anywhere on the screen. This will bring up the toolbar for several seconds, until it will be automatically hidden.



Figure 6: The on-screen toolbar.

To pin the toolbar so it doesn't automatically hide, tap the pushpin icon on the left. Tap it again to unpin the keyboard so it automatically hides.

Other buttons available on the toolbar include:

- **Keyboard Toggle:** Tapping the 'A' button toggles the touch-screen keyboard.
- **Auto-Zoom Toggle:** This button (indicated by a rectangle containing vertical and horizontal arrows), toggles the Android Client's auto-zoom feature. Tapping the Auto-Zoom button again disables this feature and zooms out to show the entire screen.
- **Disconnect:** The Disconnect button closes the session and flips back to the main host list screen.

## **AFFILIATED COMPUTER SERVICES, INC**

2900 100th Street  
Suite 309  
Urbandale, IA 50322

Toll Free: 1-800-921-5300  
Phone: 515-288-5717 • Fax: 515-288-4825

ACS FIREHOUSE Software

• Fax: +44 1344.206855

*Last updated: January 23, 2012*

© 2012 Affiliated Computer Services, Inc. All rights reserved. ACS FIREHOUSE Software, the ACS FIREHOUSE Software logo, and FHiWeb are trademarks or registered trademarks of Affiliated Computer Services, Inc Other trademarks belong to their respective owners.